

DRAWING NUMBER
53/18

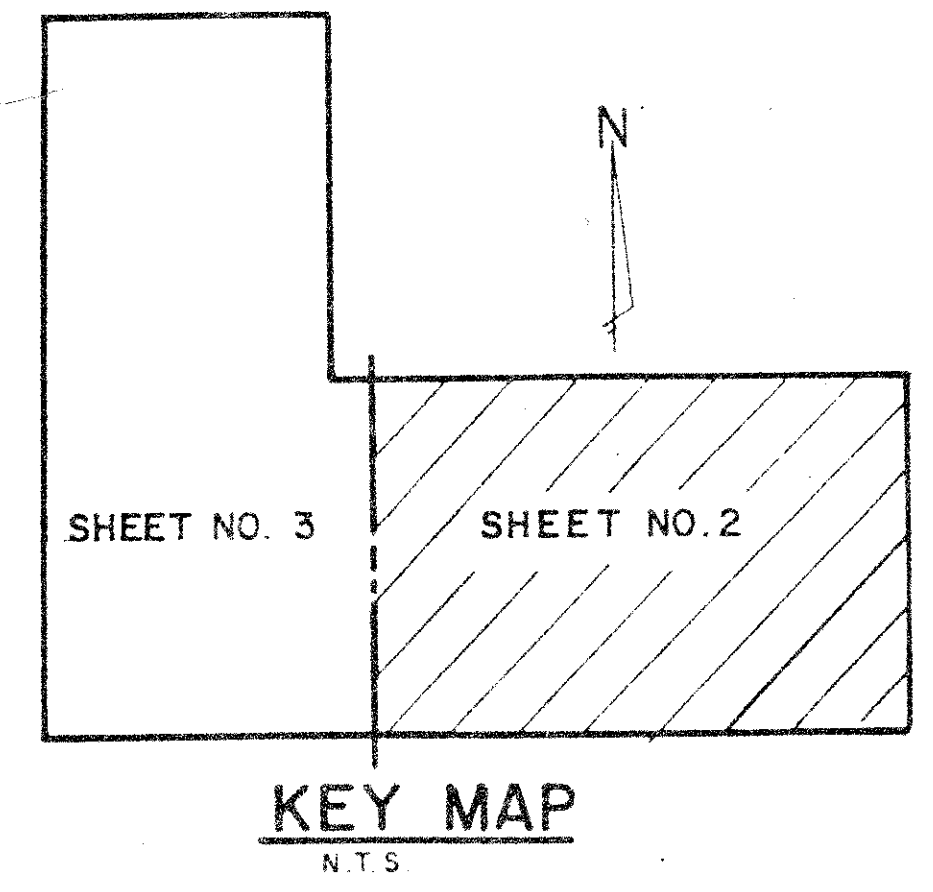
DRAWING NUMBER

DRAWING NUMBER

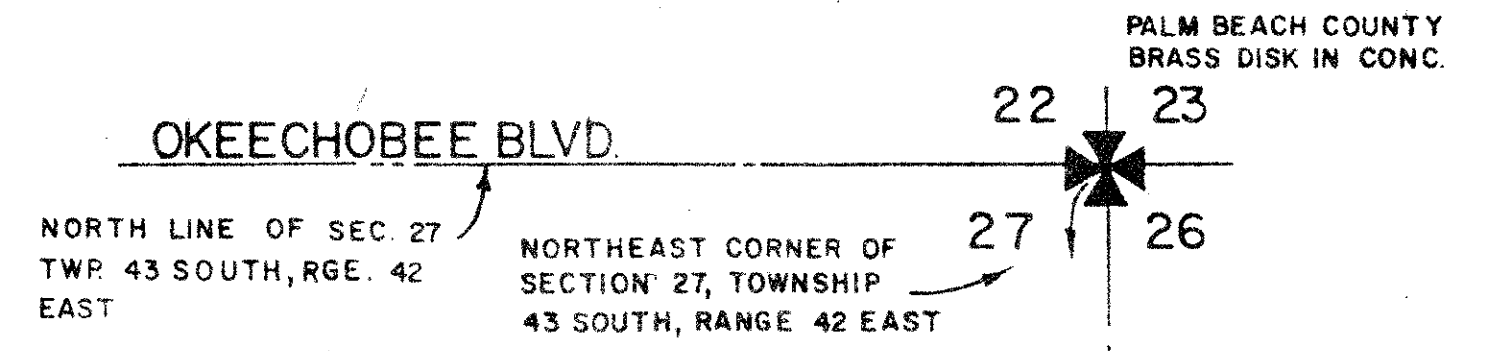
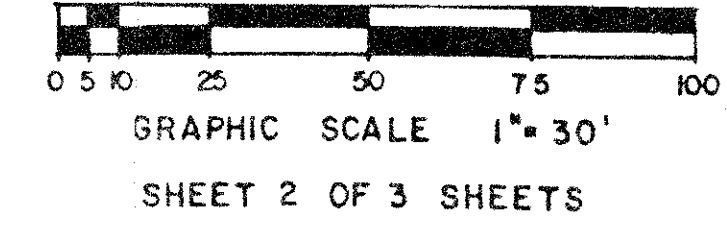
DRAWING NUMBER

THE DONALD C. WALKER COMMUNITY

18



A PORTION OF MEADS P.U.D.
LYING IN THE NORTHEAST QUARTER OF SECTION 27,
TOWNSHIP 43 SOUTH, RANGE 42 EAST
PALM BEACH COUNTY, FLORIDA

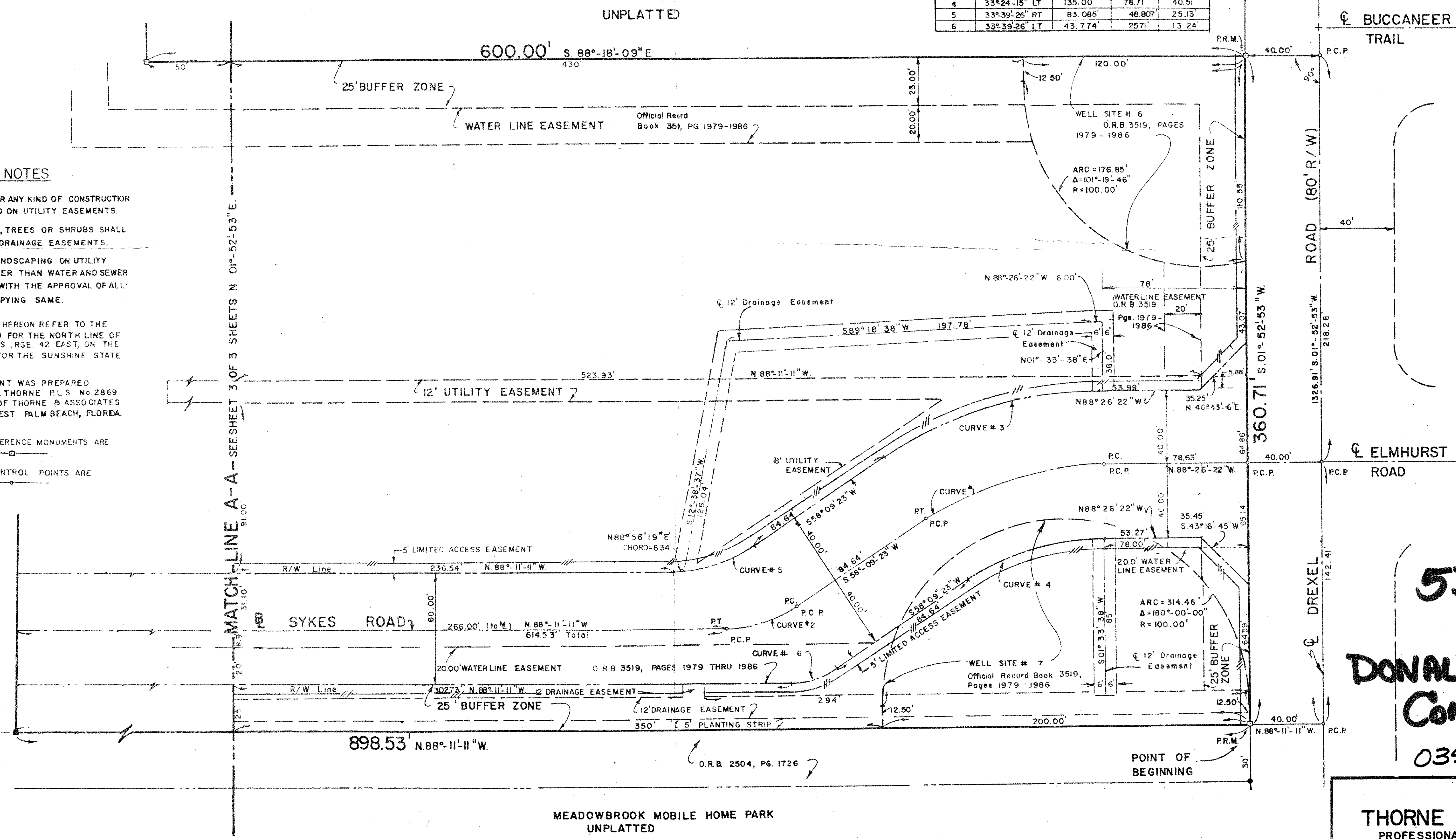


STATE OF FLORIDA
COUNTY OF PALM BEACH
THIS PLAT WAS FILED FOR
RECORD AT _____
THIS _____ DAY OF _____
A.D., 1983 AND DULY RECORDED
IN PLAT BOOK _____ ON PAGES _____
AND _____
JOHN B. DUNKLE, CLERK
CIRCUIT COURT
BY: _____

CURVE	DELTA	RADIUS	ARC	TAN.
1	33°-24'-15" LT.	175.00'	102.03'	52.51'
2	33°-39'-26" RT.	70.00'	41.12'	21.17'
3	33°-24'-15" RT.	215.00'	125.35'	64.51'
4	33°-24'-15" LT.	135.00'	78.71'	40.51'
5	33°-39'-26" RT.	83.085'	48.807'	25.13'
6	33°-39'-26" LT.	43.774'	25.71'	13.24'

SURVEYORS NOTES

- A. NO BUILDINGS OR ANY KIND OF CONSTRUCTION SHALL BE PLACED ON UTILITY EASEMENTS.
- B. NO STRUCTURES, TREES OR SHRUBS SHALL BE PLACED ON DRAINAGE EASEMENTS.
- C. APPROVAL OF LANDSCAPING ON UTILITY EASEMENTS OTHER THAN WATER AND SEWER SHALL BE ONLY WITH THE APPROVAL OF ALL UTILITIES OCCUPYING SAME.
- BEARINGS SHOWN HEREON REFER TO THE DATUM AS USED FOR THE NORTH LINE OF SEC 27, TWP 43 S, RGE 42 EAST, ON THE RIGHT OF MAP FOR THE SUNSHINE STATE PARKWAY.
- THIS INSTRUMENT WAS PREPARED BY FREDERICK J THORNE P.L.S. No 2869 IN THE OFFICES OF THORNE & ASSOCIATES P.O. BOX 3501 WEST PALM BEACH, FLORIDA.
- PERMANENT REFERENCE MONUMENTS ARE SHOWN THUS
- PERMANENT CONTROL POINTS ARE SHOWN THUS



PLAT NO. 2 PLANTATION MOBILE HOMES ESTATES
P.B. 28, PG. 43

53/18 Collect
82-13
or 80-139

DONALD C. WALKER Community
0396-300

THORNE & ASSOCIATES
PROFESSIONAL LAND SURVEYORS
P.O. BOX 3501 WEST PALM BEACH, FLORIDA 33402
PHONE 689-963